

# ADOBE PHOTOSHOP CC 2015

## a complete tour of preferences

also showing tool preferences and how to setup  
color management for workflow color accuracy



**TRAINING**ONSITE.COM

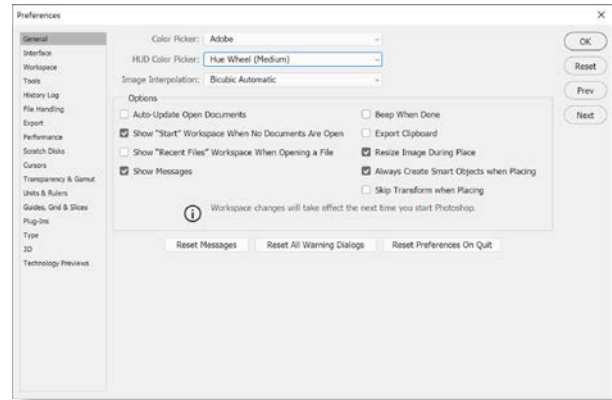
publishing • training • consulting

# 1 General Preferences

Photoshop > Preferences (Cmd+K, Mac) or Edit > Preferences (Ctrl+K, Win). This is the first pane of the Preferences sections.

I prefer to set the HUD Color Picker to Hue Wheel (Medium). Image Interpolation set to Bicubic Automatic means that it will sharpen when you down-rez and blur when you up-rez. These settings are changeable under Image > Image Size.

In Options, I usually turn off Export Clipboard and Auto-Update Open Documents. New is Show Start and Recent Files Workspace. I like these off while tweaking settings. Also new is Skip Transform when Placing, which places immediately to the center of the canvas.

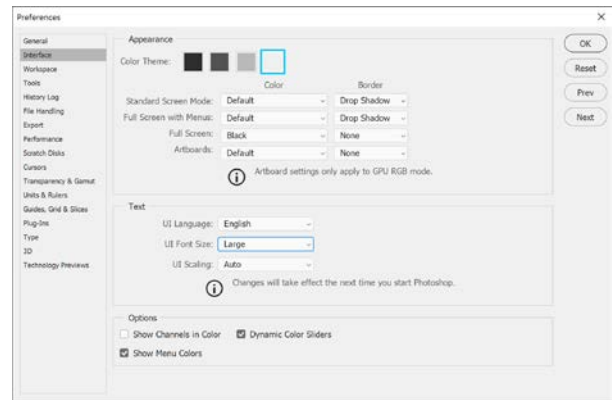


# 2 Interface Preferences

Photoshop > Preferences (Cmd+K, Mac) or Edit > Preferences (Ctrl+K, Win), and click on the Interface pane; the second pane of the Preferences sections.

I generally prefer a lighter gray for the interface, but whichever Color Theme you use, they are all done in neutral black, and shades of gray, to nearly white.

For those with diminished vision, being able to set the UI Font Size to medium or large is very helpful.

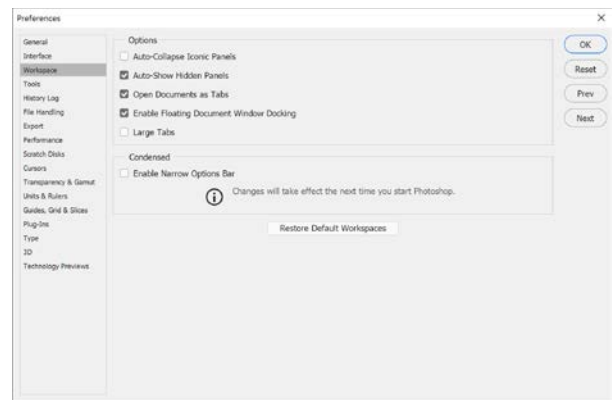


# 3 Workspace Preferences

Photoshop > Preferences (Cmd+K, Mac) or Edit > Preferences (Ctrl+K, Win) and click on the Workspace pane; the third pane of the Preferences sections.

These Options control how the docked panels behave, and also subtle behaviors as to how the document tabs work. Condensed: Enable Narrow Options Bar turned on causes bigger buttons on the Options Bar (aka, the Control Panel) to display as smaller square buttons, in order to save horizontal space.

If you would like to restore changed default workspaces, clicking the Restore Default Workspaces button is useful.



# 4 Tools Preferences

Photoshop > Preferences (Cmd+K, Mac) or Edit > Preferences (Ctrl+K, Win) and click on the Tools pane; the fourth pane of the Preferences sections.

I turn them all the zoom switches on. Enable Flick Panning means you can pan across a zoomed-in image by throwing the mouse drag. Double Click Layer Mask (thumbnail) Launches Select and Mask Workspace, is a nice feature.

Vary Round Brush Hardness based on HUD vertical movement means Alt + Right-Click drag up and down changes brush softness; Alt + Right-Click drag left and right changes brush diameter.



## 5 History Log Preferences

Photoshop > Preferences (Cmd+K, Mac) or Edit > Preferences (Ctrl+K, Win) and click on the History Log pane; the fifth pane of the Preferences sections.

The History Log is turned on when you need to be able to prove, in a legal system (photo images used as courtroom evidence), what was done when editing an image. It can either embed History Log metadata into the image file, or write an external text file, or both.

For more information about legalities of digital images, see [https://en.wikipedia.org/wiki/Digital\\_evidence](https://en.wikipedia.org/wiki/Digital_evidence)

## 6 File Handling Preferences

Photoshop > Preferences (Cmd+K, Mac) or Edit > Preferences (Ctrl+K, Win) and click on the File Handling pane; the sixth pane of the Preferences sections.

You have an automatic backup for your file. I set it to save every 5 minutes. Maximize PSD and PSB File Compatibility, if set to Always, makes an extra composite layer inside the file. If Never, it omits the extra composite layer. I set it to Never. Your file sizes will be smaller, since there is no extra composited layer.

Adobe Drive enables integration with a digital asset management system (if you have it) and your PS, ID, AI, and IC apps.

## 7 Export Preferences

Photoshop > Preferences (Cmd+K, Mac) or Edit > Preferences (Ctrl+K, Win), and click on the Export pane; the seventh pane of the Preferences sections.

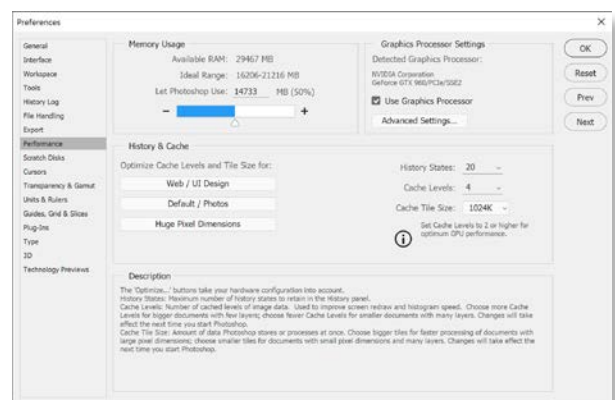
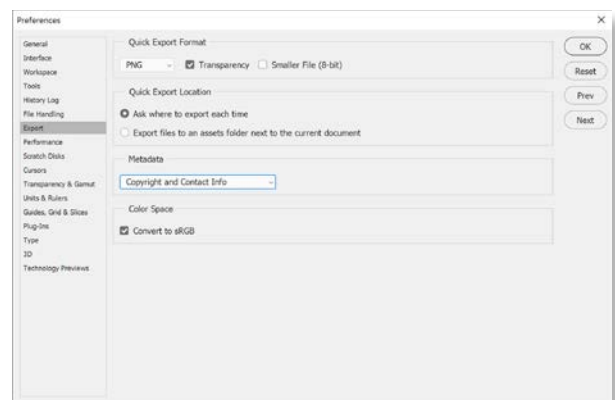
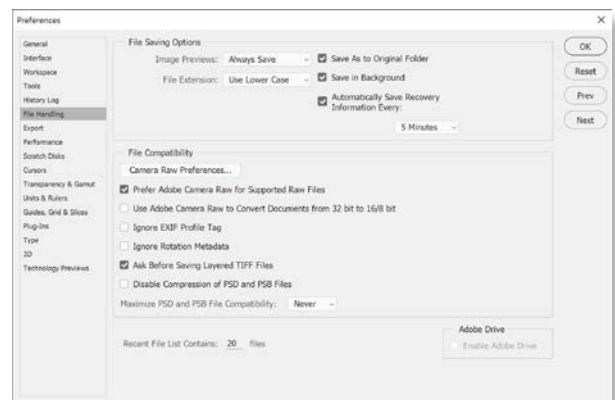
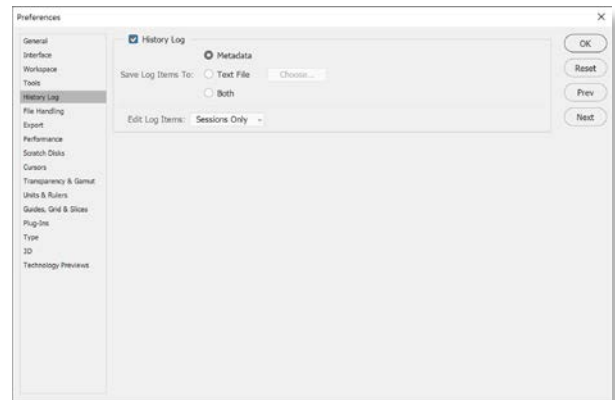
Quick Export allows you to decide in advance what kind of file you want to export: PNG, JPG, or GIF. You can choose transparency, versus PNG-8 (like a GIF). You can allow it to bring up a file browser dialog box, or have it make an assets folder.

Also choosable in advance are whether to embed copyright and contact info into the PNG file, and whether to convert it to sRGB color space, the standard color space for all web graphics.

## 8 Performance Preferences

Photoshop > Preferences (Cmd+K, Mac) or Edit > Preferences (Ctrl+K, Win), and click on the Performance pane; the eighth pane of the Preferences sections.

A major decision for Photoshop is how much system RAM to give it. Considering that 16GB is needed to run it well; then set the slider to at least 50% of available system RAM. Try to stay within the Ideal Range listed. If you need to run many large programs at the same time, set the memory to a smaller amount.



On 64-bit OS systems, Photoshop can use 4GB RAM and up. 32-bit mode versions of Photoshop can only access about 3GB RAM.

To test memory settings, select the Efficiency setting from the Status Bar (or Info panel), and then do some tasks. If only RAM memory is being used during these steps, then the Efficiency will be 100%. Percentage is time doing the operation versus sending data to the hard drive. Below 100%, Photoshop is using the hard drive. Close other programs, and/or install more RAM memory.

Edit > Purge can be used to free up RAM that is used for Undo, Clipboard, and History. This cannot be undone. History States are the amount of undos you have. I set this to 20 undos.

## 9 Scratch Disks Preferences

Photoshop > Preferences (Cmd+K, Mac) or Edit > Preferences (Ctrl+K, Win) and click on the Scratch Disks pane; the ninth pane of the Preferences sections.

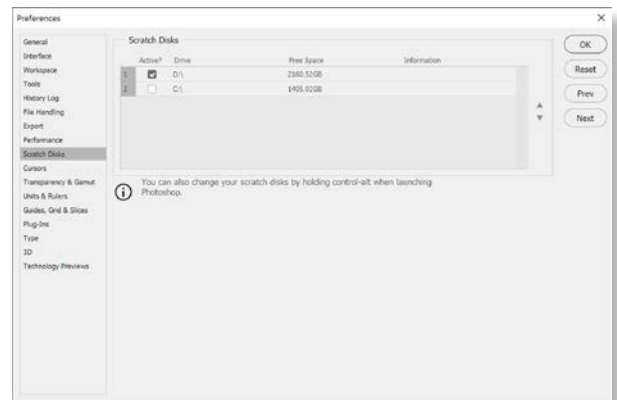
For maximum performance, use separate, dedicated physical drives for OS startup, data, and scratch drives. A Scratch Disk is a second or third physical hard drive. If you have one installed in your system, let Photoshop overflow onto this non-bootup hard drive. This is useful for really large files and really complicated and extensive rendering and filtering.

Click the option that best fits your workflow to set both Cache Levels and Tile Size: I normally leave it at **Default/Photos**.

**Web/UI Design**—Best for users working with images with smaller dimensions and many layers. **Default/Photos**—Designed for general use with a variety of document types. **Huge Pixel Dimensions**—Works well with large images and few layers.

In the Advanced Settings, set it to Advanced rather than Basic or Normal. Photoshop runs fastest when it has a powerful Nvidia OpenGL chipset video card with lots of VRAM.

[https://helpx.adobe.com/photoshop/kb/photoshop-cc-gpu-card-faq.html#Tested video cards for Photoshop CC](https://helpx.adobe.com/photoshop/kb/photoshop-cc-gpu-card-faq.html#Tested%20video%20cards%20for%20Photoshop%20CC)



## 10 Cursors Preferences

Photoshop > Preferences (Cmd+K, Mac) or Edit > Preferences (Ctrl+K, Win) and click on the Cursors pane; the tenth pane of the Preferences sections.

When painting on an image, I prefer a Full Size Brush Tip, also choosing Show Crosshair in Brush Tip. The small window above the checkbox choices models how that will look.

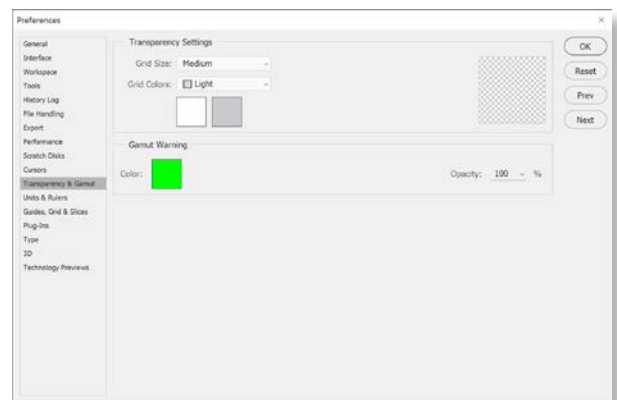
I generally tend to leave the Other Cursors in their standard appearance. When you occasionally need a precise Other Cursor, you can temporarily press the CapsLock key to switch the look of the cursor to the precise bullseye.



## 11 Transparency & Gamut Preferences

Photoshop > Preferences (Cmd+K, Mac) or Edit > Preferences (Ctrl+K, Win), and click on the Transparency & Gamut pane; the eleventh pane of the Preferences sections.

Here you have two symbolic uses of color; neither color prints, they only show onscreen. The gray and white checkerboard signifies transparency. I change the Gamut Warning to a loud green. The Gamut Warning toggle is under the View menu. It shows the areas of the picture where the color will clip.



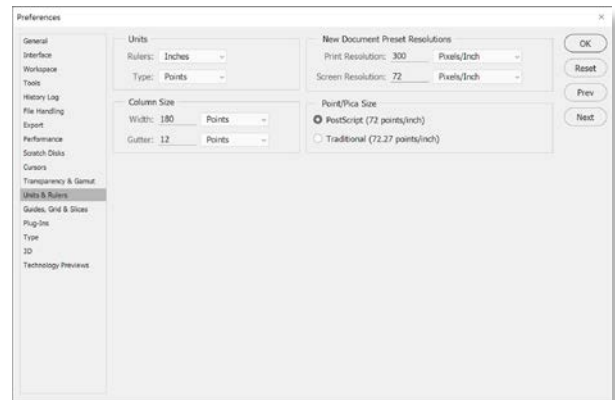
## 12 Units & Rulers Preferences

Photoshop > Preferences (Cmd+K, Mac) or Edit > Preferences (Ctrl+K, Win) and click on the Units & Rulers pane, the 12th pane.

I usually set the measurement to Picas with the Type being measured in Points. On the other hand, outside of preferences; whenever you wish to change the measurement system, simply right-click on the rulers, and change it to inches, pixels, or metric.

Column size is useful for newspapers and magazines with columnar layouts. Defined here, the column width and gutter size becomes a unit of measure.

Why doesn't that old pica stick from your print shop measure the same? It turns out that metal-era picas are slightly different from electronic-type-era picas. Leave it set to PostScript.

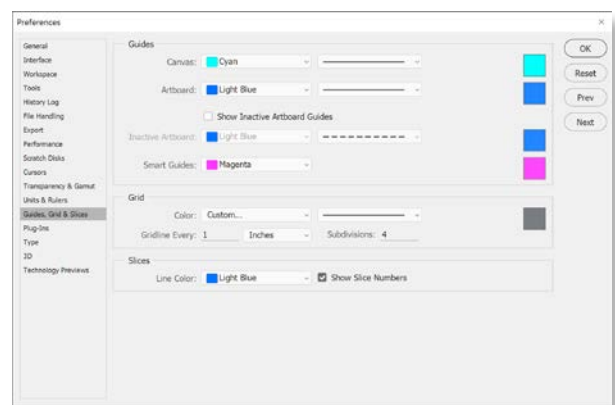


## 13 Guides, Grid & Slices Preferences

Photoshop > Preferences (Cmd+K, Mac) or Edit > Preferences (Ctrl+K, Windows), and click on the Guides, Grid & Slices pane; the 13th pane.

The only time I visit this section of the preferences is when I am doing forensic work and studying document fraud. When you change the Gridline Every to 1 Point with 10 subdivisions, then you can accurately measure to the tenth of a pixel.

This accuracy is seen when zoomed in to a maximum of 3200%, and you can see where the typesetting spacing is off, indicating the possibility of a falsified document.



## 14 Plug-ins Preferences

Photoshop > Preferences (Cmd+K, Mac) or Edit > Preferences (Ctrl+K, Win) and click on the Plug-Ins pane; the 14th pane of the Preferences sections.

New in CC is the open-source and scriptable Generator, which allows you to create image assets in real time as you work, eliminating the tedious steps of copying, slicing and exporting each layer manually. Simply add a file extension to the name of your layer or layer group, and it will automatically create a JPG, PNG or GIF from the contents of that layer. If you make a change, the file is immediately updated.

If you want to see filters listed and accessible via the Filter menu as well as the Filter Gallery, turn on Show All Filter Gallery Groups and Names.



## 15 Type Preferences

Photoshop > Preferences (Cmd+K, Mac) or Edit > Preferences (Ctrl+K, Win), and click on the Type pane. This is the 15th pane of the Preferences sections.

Type Options include typographical smart quotes, type layer glyph alternates displayed onscreen, and the Escape key can be used to commit to text changes. Fonts are now grouped by family.

The font preview size is now under Type > Font Preview Size.

To maximize performance, use font management software to activate only the fonts you need.



## 16 3D Preferences

Photoshop > Preferences (Cmd+K, Mac) or Edit > Preferences (Ctrl+K, Windows) and click on the 3D pane. This is the 16th pane of the Preferences sections.

To operate Photoshop as a 3D tool, you need the very top end of RAM amounts, and video card strength. It is recommended that you choose a video card with at least 512 MB of video RAM in order to run this 3D software effectively.

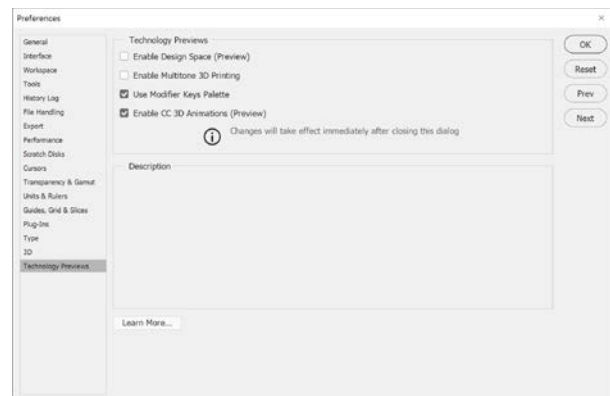
Related to this preference, and new since Photoshop CC, is the ability to print to a 3D printing device.



## 17 Technology Previews

Photoshop > Preferences (Cmd+K, Mac) or Edit > Preferences (Ctrl+K, Windows) and click on the Technology Previews pane. This is the 17th pane of the Preferences sections.

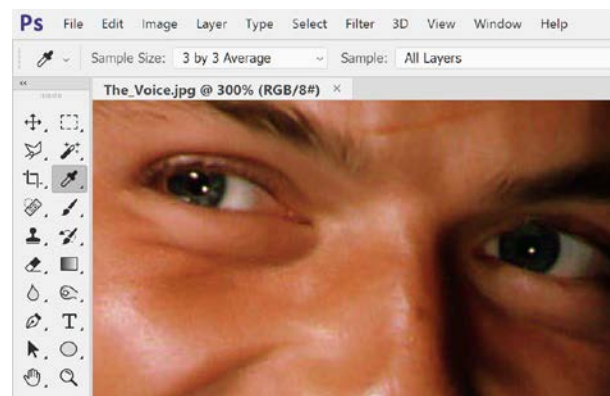
Technology Previews are services and features in Creative Cloud that Adobe is releasing publicly before they're complete. Not an untested beta, Technology Previews are fully tested and supported, but Adobe is still perfecting their capabilities. Previewing the technology gives Creative Cloud members the opportunity to trial the feature and give feedback to further shape the development of the software.



## 18 Eyedropper Sample Size Preference

Photoshop > Tool Panel > Eyedropper Tool > Options Bar > Sample Size, and click on the dropdown menu; a tool preference.

Setting the sample size to 3 x 3 Average or higher helps the Magic Wand to work more efficiently. The default setting of Point Sample is only sampling the numeric color of one pixel, whereas 3 x 3 samples and averages the numeric color value of nine pixels. This helps factor out digital noise pixels.

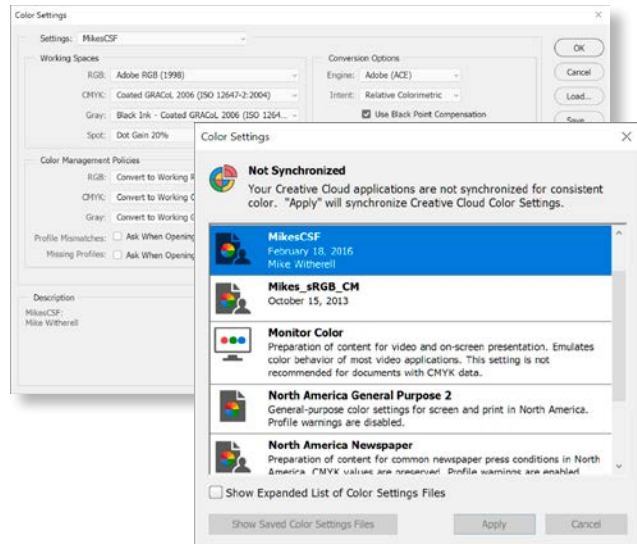


## 19 Color Management Preferences

Photoshop > Edit > Color Settings (Shift+Cmd+K, Mac) or (Shift+Ctrl+K, Windows).

For a workflow mixing print and web products, a good setup has the RGB space set to Adobe RGB (1998). The choice of CMYK working space should be what your printing company recommends, perhaps GRACOL 2006. You might choose the same GRACOL for the Grayscale space, thus causing grayscale images to render entirely to the black ink plate.

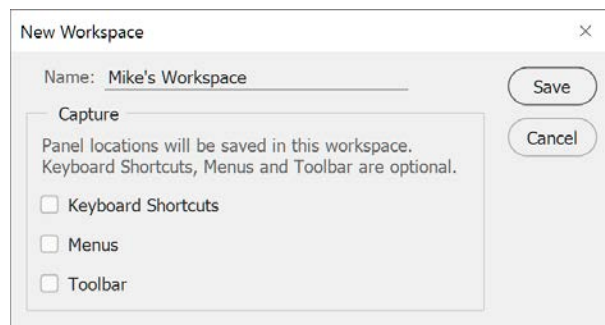
For strict control, process images through PS before placing into ID. Set the policy to permanently convert the color space. In order to prevent a dialog box pop-up, you might consider turning off all the Ask Me switches. Leave all other settings the same. Save the Color Settings File. Then go to Bridge; click on Edit > Color Settings, and synchronize to InDesign, Illustrator, and Acrobat.



## 20 Workspace Preferences

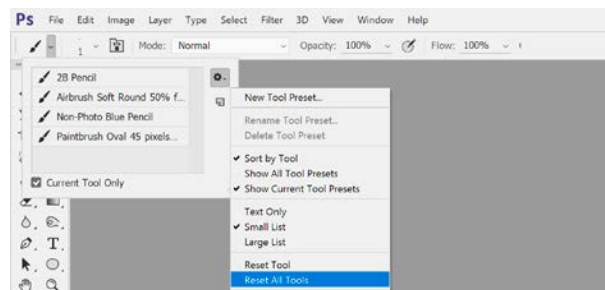
Photoshop > Window > Workspace > New Workspace.

You can adapt PS to the way you work by selecting from several preset workspaces or by creating one of your own. Do this by opening and arranging panels as you like them, and then click on Window > Workspace > New Workspace, where you give it a name and click OK. You can also save the current set of keyboard shortcuts, menu modifications, and toolbar customizations.



## 21 How to reset Tools

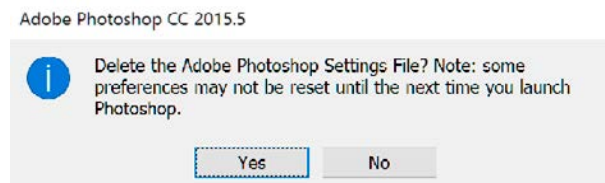
The Tool Preset icon on the Options bar can be used to reset the tools to their defaults. Right click on the Tool Preset picker in the Options Bar or the Tool Preset Panel. Select the desired Tool and Control-click (Mac) or right mouse click on the Tool Preset Picker to select "Reset Tool" or "Reset All Tools".



## 22 How to reset Preferences

If you suspect damage to preferences, restore preferences to their default settings: To reset the preferences files for PS, start the application while holding down Ctrl+Alt+Shift (Windows) or Command+Option+Shift (Mac OS). Then, click Yes to the message, "Delete the Adobe Photoshop Settings file?" Note: Using this shortcut, preference files for custom shortcuts, workspaces, and color settings will also be reset to default. You can manually delete: Adobe Photoshop CC Prefs.psp

(Mac OSX) Users/[user name]/Library/Preferences/Adobe Photoshop CC Settings  
(Win10) Users/[user name]/AppData/Roaming/Adobe/Adobe Photoshop CC 2015.5/  
Adobe Photoshop CC 2015.5 Settings



# Ask about our support services



InDesign | InCopy | [Adobe Creative Cloud](#) | tablet | EPUB | folio  
Section 508 | Illustrator | Photoshop | Acrobat | Captivate | FrameMaker  
[mikewitherell@jetsetcom.net](mailto:mikewitherell@jetsetcom.net) | [Adobe Certified](#) | [urszulawitherell@jetsetcom.net](mailto:urszulawitherell@jetsetcom.net)  
train with us at [JetSetcom.net](http://JetSetcom.net) and [TrainingOnsite.com](http://TrainingOnsite.com) in person



**JETSETCOM.NET**  
publishing • training • consulting